

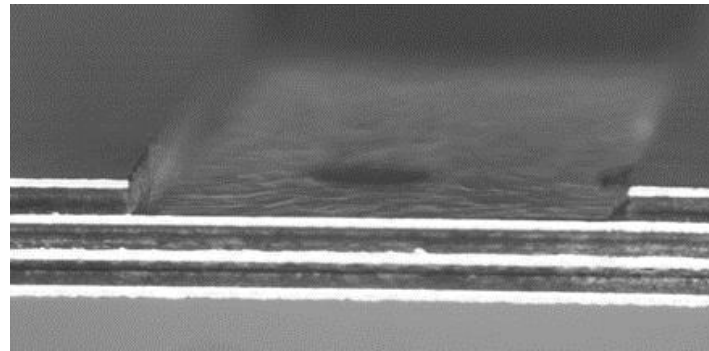


NEW PRODUCT! End Mill 2 Flute



PN	Description
E2500B*FST	EM 2 FL X 1/4" X Flat Surface Tool

The fly-cutting end mill is a relatively new product. Its inverted point reduces chatter and after a short table movement, it produces a flat surface. These tools can be used for multiple applications where a smooth, flat surface is needed and minimal mass is being removed. The larger body size allows for these milling tasks to be completed faster than can be performed by a smaller tool.



FR4 Hi-Tg - .250" x .020" Pocket

CRT stocks a number of specialty tools including single-flute quarter-inch countersinks and quarter-inch two flute end mills all with 1/8" shanks. Both products share the tapered body design. The distinctive appearance was adopted to minimize mass and to allow for smoother chip evacuation.